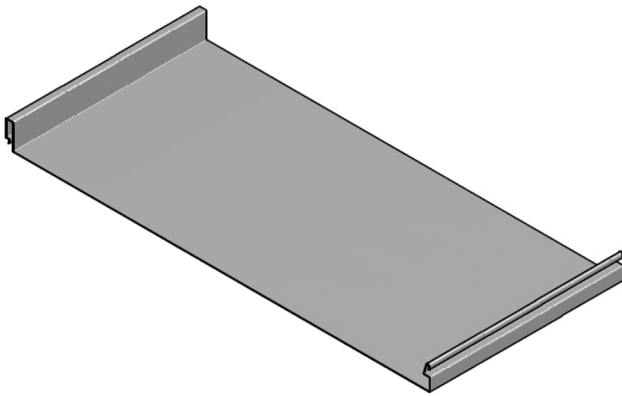


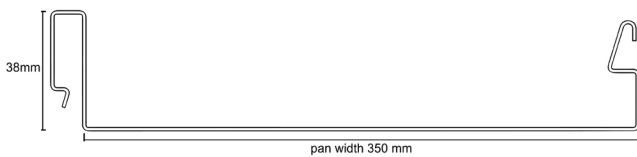


ASTEEL
GROUP

LOKSNAP-38



PROFILE DIMENSION

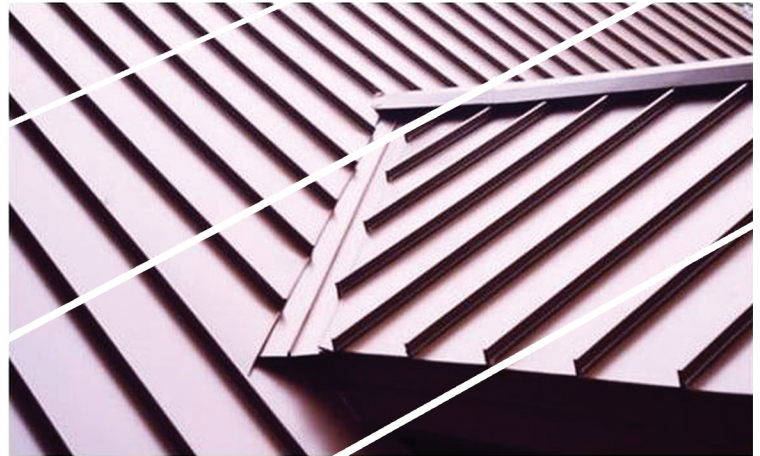
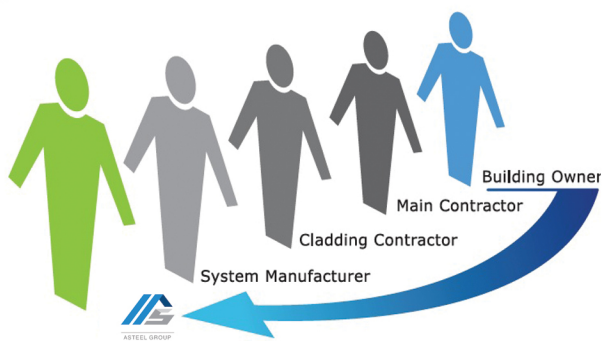


STEEL MATERIAL

envioSERIES pre-finished steel combines outstanding performance with unrivalled reliability and impressive sustainability credentials. The result of sustained evolution and revolutionary coating technology, the best product just got even better.

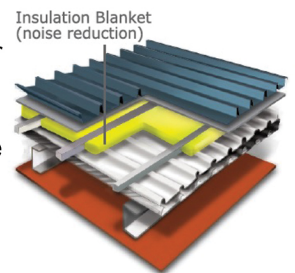
WARRANTY- Peace Of Mind

The warranty offered is most comprehensive guaranteed up to 30 years for pre-finished steel products. Dramatic and unrivalled improvements in colour stability and gloss retention are translated into a durable product with greater longevity. The warranty guarantee is directly with the building owner meaning that in the case of a claim the contact of ASTEEL is direct rather than having to go through the supply chain, saving time, money and unnecessary responsibility avoidance by any parties.



ACOUSTIC ROOF

Composite steel/ polymer sheets forming a sandwich structure offer a compact solution that also provides the roof with sound insulation properties. They reduce the impact noise from rain or hail, ensuring a highest standard of interior comfort.



OUR MATERIAL BRAND

envioMATT
Rough Matt Steel

envioPRIME
Prefinished Steel

envioClean
Self Cleaning Steel

enviokool
Light Coated Steel

envioTEX
Sheer textured Steel

GALUZINC
Silvery Trendy Steel



DESIGN
FLEXIBILITY



TERMITE
PROOF



WARRANTY



RECYCLING



IMPROVED
COATING



DURABILITY



ASTEEL GROUP
PRODUCT

DESIGN REQUIREMENT

Rainfall Intensity (mm/ hour)	Roof Slope				
	1 in 29 (2°)	1 in 20 (3°)	1 in 12 (5°)	1 in 7.5 (7.5°)	1 in 6 (10°)
200	19	24	28	32	37
250	15	19	N.R.	38	32
300	13	N.R.	N.R.	31	30
400	10	N.R.	N.R.	24	26

Max. Allowable Spacing Support							
Thickness (mm)	Roofs			Walls			Free Canti- lever (mm)
	Single Span (mm)	End Span (mm)	Internal Span (mm)	Single Span (mm)	End Span (mm)	Internal Span (mm)	
0.38	450	450	450	450	450	450	125
0.42	450	450	450	450	450	450	150
0.48	450	450	450	450	450	450	175

INSTALLATION

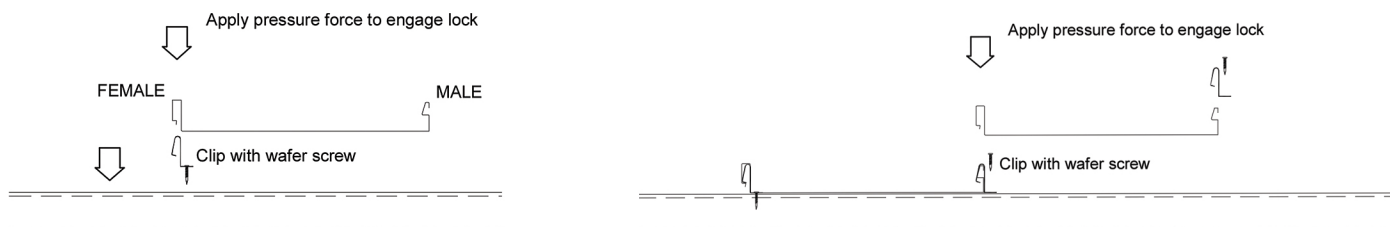
1. Safety Precaution. Impose highest safety awareness, protecting all parties from accident. Provide adequate personal protective equipment (PPE), fall arrestment tools and perimeter guardrails. Strictly adhere to all laws and practices that apply to your site.

2. Lockclip Fixing

The first run of LOKSNAP-38 have to be located and fastened, one onto each purlins, so that they will correctly engage in the female and centre ribs of the first sheeting when it is located over them. Align and fasten the remaining of the first run of LOKSNAP-38 using a string as a straight edge.

3. Fix The First and Subsequent Sheet

Locate the first sheeting over the fasten run of LOKSNAP-38, having fasten it longitudinal in relation to the eaves overhang and then fully engage on LOKSNAP-38 with foot pressure applied to the centre and female ribs over each LOKSNAP-38. Position the next run of LOKSNAP-38, one to each purlins engage over the male ribs of the installed sheet and fasten each LOKSNAP-38 with the recommended wafer head fasteners. Place the second sheet over the second run of LOKSNAP-38 with the female rib overlapping the male rib of the first preceding sheet and the centre rib over the centre rib u-stand of the clips. A distinct 'cluck' will be heard as the spurs along the edge of the male ribs snap into the shoulder along the female ribs.



LOKSNAP-38	Cover width (mm)	Mass per unit area (kg/m ²)	Minimum Roof pitch (°)	Height of Seam (rib) (mm)	Pre-curve radius (mm)		Natural-curve radius (mm)		Base Metal Thickness (BMT) (mm)
					Minimum	Maximum	Minimum	Maximum	
38	350	6.10	3	38	1,500	30,000	30,000	60,000	0.55

FLEXIBILITY

A concealed fixed roofing profile, its versatility allows it to be used on straight, tapered, curved roof forms. Its high-ribbed profile provides excellent rainwater drainage capacity.

GENERAL NOTE: Oil Canning

Oil canning is an aesthetic issue, not a structural problem or a defect. It is unrealistic to expect any architectural roof or similar wide-metal element to be totally free of some degree of oil-canning. While oil canning cannot be totally eliminated, adherence to industry acceptance and recognized methods of design, metal specification, handling, fabrication, and installation can minimize its occurrence. Carefully attention to the causes of oil canning within all the phases of design and construction is the most effective way to reduce its occurrence.

ASTEEL Sdn. Bhd. (393042-D)

KUCHING

Office & Factory

Lot 712, Block 7, Demak Industrial Park,
93050, Kuching, Sarawak, Malaysia.
Tel: +6082 433888 Fax: +6082 433833

MUKAH

Office & Factory

Sublot 6&7, Lot 1114&1115, Seng Ling Industrial
Estate, Jalan Bedanga, 96400, Mukah, Sarawak.
Tel: +6016 7020 149

BINTULU

Office & Factory

Lot 10110, Block 32, Kemena Land District,
Mile 6, Jalan Bintulu/Sibu, 97000, Bintulu,
Sarawak Malaysia
Tel: +6086 339648 Fax: +6086 315648

MIRI

Office & Factory

Lot 7900, D/lot 872, Block 5, Kuala Baram
Land District, 98000, Miri, Sarawak.
Tel: +6085 651925 Fax: +6085 651925

DISTRIBUTOR:

This brochure must not be reproduce or transmitted in any form either electronic, mechanical, photocopying, recording or otherwise without written consent from ASTEEL Sdn. Bhd.

STORAGE

If nestable profiles become wet while closely stacked, formation of wet storage stain or "white rust" is inevitable.

To minimise the possibility of inadvertent damage:

- Inspect deliveries on arrival. If moisture is present, individual sheets should be dried immediately with a clean rag and then stacked to allow air to circulate and complete the drying process.
- Well ventilated storage is essential. Always store metal products under cover in clean, well ventilated buildings.
- Cross stack or fillet sheets where outside storage is unavoidable and make provision for a fall to allow water to run off. Cover the sheets.

It is the responsibilities of the roofing contractor to avoid damaging the roof sheeting during its installation and fixing. Never drag sheets from pile. Remove by 'turning off' the stack. Lift sheets onto a roof, and do not drag over the eaves or the purlins. Use clean footwear. Remove swarf and other contaminants regularly.