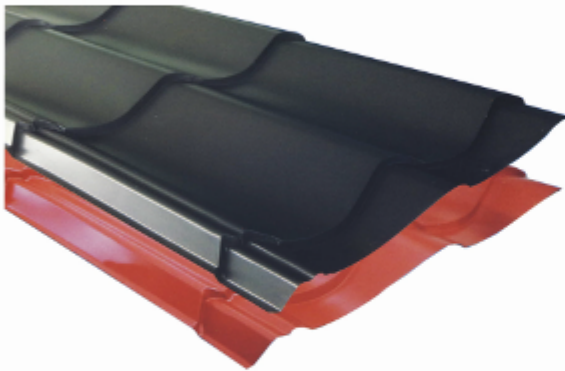


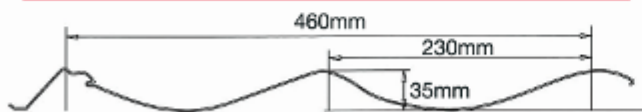


ASTEEL  
GROUP

# AIDYL ROOF II



## PROFILE DIMENSION



## STEEL MATERIAL

envioSERIES pre-finished steel combines outstanding performance with unrivalled reliability and impressive sustainability credentials. The result of sustained evolution and revolutionary coating technology, the best product just got even better.

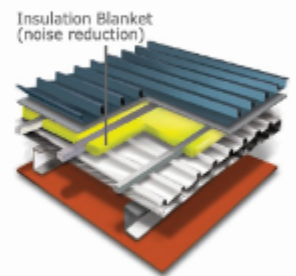
## WARRANTY- Peace Of Mind

The warranty offered is most comprehensive guaranteed up to 30 years for pre-finished steel products. Dramatic and unrivalled improvements in colour stability and gloss retention are translated into a durable product with greater longevity. The warranty guarantee is directly with the building owner meaning that in the case of a claim the contact of ASTEEL is direct rather than having to go through the supply chain, saving time, money and unnecessary responsibility avoidance by any parties.



## ACOUSTIC ROOF

Composite steel/ polymer sheets forming a sandwich structure offer a compact solution that also provides the roof with sound insulation properties. They reduce the impact noise from rain or hail, ensuring a highest standard of interior comfort.



## OUR MATERIAL BRAND

envioMATT  
Rough Matt Steel

envioPRIME  
Prefinished Steel

envioClean  
Self Cleaning Steel

enviokool  
Light Coated Steel

envioTEX  
Sheer Textured Steel

GALUZINC  
Silvery Trendy Steel



DESIGN  
FLEXIBILITY



TERMITE  
PROOF



WARRANTY



RECYCLING



IMPROVED  
COATING



DURABILITY



ASTEEL GROUP  
PRODUCT



## DESIGN REQUIREMENT

Rainfall Intensity (mm/ hour)	Roof Slope				
	1 in 29 (2°)	1 in 20 (3°)	1 in 12 (5°)	1 in 7.5 (7.5°)	1 in 6 (10°)
200	N.R.	N.R.	42	48	52
250	N.R.	N.R.	N.R.	38	42
300	N.R.	N.R.	N.R.	31	35
400	N.R.	N.R.	N.R.	24	26

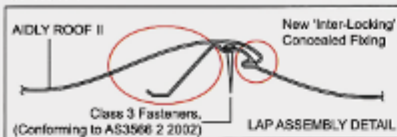
Max. Allowable Spacing Support							
Thickness (mm)	Roofs			Walls			Free Canti- lever (mm)
	Single Span (mm)	End Span (mm)	Internal Span (mm)	Single Span (mm)	End Span (mm)	Internal Span (mm)	
0.38	450	450	450	450	450	450	125
0.42	450	450	450	450	450	450	150
0.48	450	450	450	450	450	450	175

## INSTALLATION

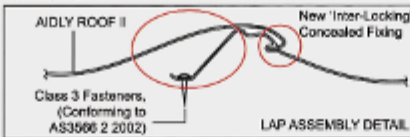
**1. Safety Precaution.** Impose highest safety awareness, protecting all parties from accident. Provide adequate personal protective equipment (PPE), fall arrestment tools and perimeter guardrails. Strictly adhere to all laws and practices that apply to your site.

**2. Fixing to Support.** Aidyl Roof II profile is pierce-fixed to timber or steel supports. This means that fastener screws pass through the sheeting. You can place fasteners for Aidyl Roof II through the crests or in the pans. To maximise water tightness, always place roof fasteners through the crests. For walling, you may use either crest or valley-fixing. Always drive the fasteners perpendicular to the sheeting, and in the centre of the rib. Don't place fasteners less than 25mm from the ends of sheets.

OPTION 1



OPTION 2



**Top threaded section:** extrudes sheeting towards the seal to maximise waterproofness. Grips the sheeting for a secure connection. Stops sheeting from moving when walked on.

**Dwell section:** prevents the sheeting from riding up during fixing and minimise distortion of the profile.

**Shank hole enlarger:** enlarges the hole in the sheeting to minimise damage to the protective coating on the screw.

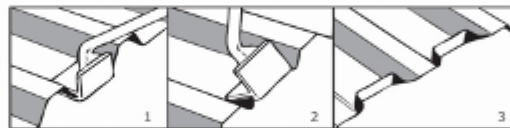
**Identification of screws.** The format of the number code is

**12** - **14** x **50**  
 Screw gauge (thread outside diameter - number in brackets is metric equivalent)  
 Thread pitch (threads per inch)  
 Overall length of the screw measured from under the head (mm)  
 Fasteners must have a coating system to meet AS3566 Class 3 or Class 4.

**3. Side Lapping.** The side of Aidyl Roof II with the anti-capillary groove is always the underlap. If end lapping is required, seek advice from our technical team on the sequence of laying and amount of overlap.

**4. Check Alignment Periodically.** Occasionally check that the sheets are still parallel with the first sheet, by taking two measurements across the width of the fixed sheeting. The string line can be used to ensure that the end of the roofing sheets is in line.

**5. Turning Up and Clean Up.** On all roofing less than 15°, the high end of all sheets must be turned up to stop water from being driven under the flashing and into the building.



- 1 place stop end tool centrally in the pan.
- 2 lift up steadily until the end is vertical.
- 3 remove tool.

**6. Cutting and Sealed Joints.** For cutting thin metal on site, we recommend cold cutting such as metal scissors or nibbler because it produces fewer damaging hot metal particles. Cut materials over the ground and not over the other materials. For sealed joints use screw or rivets and neutral-cure silicone sealant as suitable for use with TitanZinc, GaluZinc and Pre-finished Steel.

## GENERAL NOTE: Oil Canning

Oil canning is an aesthetic issue, not a structural problem or a defect. It is unrealistic to expect any architectural roof or similar wide-metal element to be totally free of some degree of oil-canning. While oil canning cannot be totally eliminated, adherence to industry acceptance and recognized methods of design, metal specification, handling, fabrication, and installation can minimize its occurrence. Carefully attention to the causes of oil canning within all the phases of design and construction is the most effective way to reduce its occurrence.

**ASTEEL Sdn. Bhd. (393042-D)**

**Kuching**

**Office & Factory**

Lot 712, Block 7, Demak Industrial Park,  
93050, Kuching, Sarawak, Malaysia.  
Tel: +6082 433888 Fax +6082 433833

**MUKAH**

**Office & Factory**

Sublot 6&7, Lot 1114 & 1115, Seng Ling Industrial  
Estate, Jalan Bdanga, 96400, Mukah, Sarawak.  
Tel: +6016 7020 149

**BINTULU**

**Office & Factory**

Lot 10110, Block 32, Kemena Land District, Mile 6,  
Jalan Bintulu/Sibu, 97000, Bintulu, Sarawak.  
Tel: +6086 339648 Fax +6086 315648

**MIRI**

**Office & Factory**

Lot 7900, D/lot 872, Block 5, Kuala Baram  
Land District, 98000, Miri, Sarawak.  
Tel: +6085 651925 Fax: +6085 641045

DISTRIBUTOR:

This brochure must not be reproduce or transmitted in any form either electronic, mechanical, photocopying, recording or otherwise without written consent from ASTEEL Sdn. Bhd.