



PRODUCT IDENTIFICATION

Please check the brand along the edge of the coil reverse side for product identification and originality.

envioShield 55% Al-Zn Alloy

EXTRA DURABILITY FROM



PREFERRED SUBSTRATES:

GALUZINC® G550 AZ200 Steel (Aluminium- Zinc Alloy Coated Steel)

GALUZINC® G300 AZ200 Steel (Aluminium- Zinc Alloy Coated Steel)

DISTRIBUTE BY:

ASTEEL (SARAWAK) SDN BHD (1363731-A)

Kuching Factory

Lot 801, Block 7, Demak Laut Industrial Park,
93050 Kuching, Sarawak, Malaysia.
TEL: +6082 433888
FAX: +6082 433833

Bintulu Factory

Lot 598 Block 20, Jalan Tg. Kidurong,
Kidurong Industrial Estate,
97000 Bintulu, Sarawak, Malaysia.
TEL: +6086 255720
FAX: +6086 255020

Mukah Factory

Sublot 6&7, Lot 1114&1115,
Seng Ling Industrial Estate, Jalan Bedanga,
96400 Mukah, Sarawak, Malaysia
TEL: +6016 7020 149

Miri Factory

Lot 7900 D/lot 872 Block 5,
Kuala Baram Land District,
98000 Miri, Sarawak, Malaysia.
TEL: +6085 651925
FAX: +6085 641045

ASTEEL (SABAH) SDN BHD (1062207-W)

Kota Kinabalu Factory

Lot 10, Package 1 General Industrial Zone
Kota Kinabalu Industrial Park (KKIP)
KM 26 Jalan Tuaran 88460
Kota Kinabalu, Sabah, Malaysia.
TEL: +6088 498866
FAX: +6088 498877

Tawau Factory

TB 758 Mile 3¼ Jalan Apas,
91015 Tawau,
Sabah, Malaysia.
TEL: +6089 912500 / 916688
FAX: +6089 915000

ASTEEL SYNERGY SDN BHD (1359028-V)

Klang Factory

PT146099, Pelabuhan Barat,
Pulau Indah, 42000 Pelabuhan Klang,
Selangor, Malaysia.
TEL: +6013-207 9812

ASTAR STEEL SDN BHD (782292-U)

Factory & Office

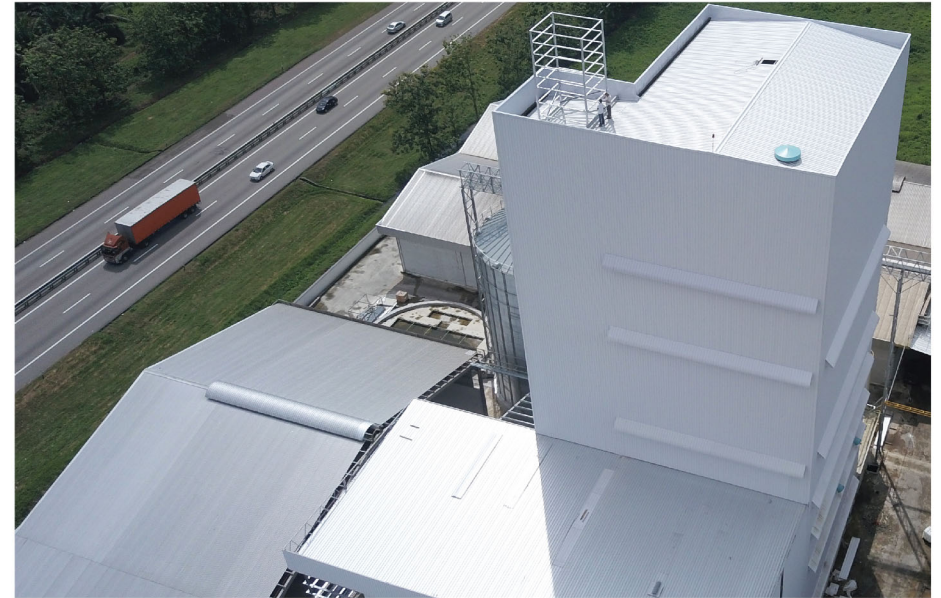
PTD 102979, Jalan Seelong Jaya 15,
Mukim Senai Kulai, 81400 Senai, Johor.
TEL: +607-5992846 / 2849
FAX: +607-5992854
Email: enquiry@acesteel.com.my

MANUFACTURE BY:

ASTEEL SDN BHD (393042-D)

Kuching Factory

Lot 712, Block 7, Demak Laut Industrial Park,
93050 Kuching, Sarawak, Malaysia.
TEL: +6082 433888
FAX: +6082 433833



RESIST WEAR AND DECAY

Why choose envioSHIELD® from ASTEEL?

- ✓ ASTEEL is wholly own subsidiaries of YKGI which is listed in Bursa Main Market
- ✓ Produced with Japanese Advance Technology
- ✓ Complied with SIRIM Product Certification
- ✓ Certified under CIDB Akta 520
- ✓ Meets International Building Standards
- ✓ Product performance is field tested
- ✓ Peace of Mind with Manufacturer's Warranty to Customer



is the ultimate coated steel that delivers
Excellent Colour Performance
in the test of time and aggressive environment.

Resistance to Decaying Elements

envioShield is our line of steel products protected by polyvinylidene fluoride (PVDF) coating system that comprises 70% Hylar® 5000 or Kynar® 500 PVDF fluoropolymer resin that offers outstanding resistance to the elements, making them particularly useful in metal roofing and cladding systems.

Indeed, the utilisation of such optimised metallic coating steel substrates helps envioshield achieve industry-leading corrosion resistance and cutting-edge protection.

Stand Up Against Decaying Elements

Buildings must not only stand the test of time, they should be also be able to stand up the elements. This can be a veritable challenge when one considers the many agents in the natural environment that corrode, fade, or break down building materials. what, then, are we to do?

Resistance to Fading

envioShield has excellent colour and gloss retention properties that ensure your building looks new and fresh for an extended period. Indeed, envioShield coated steel possesses excellent dirt resistance that prevents tropical dirt particles from being embedded onto the paint film, so colours stay bright and clean. Our coating system also features superior resistance to ultraviolet light, so the resin's underlying structure stays intact. This provides added resistance to chalking on the steel surface.

Resistance to Heat

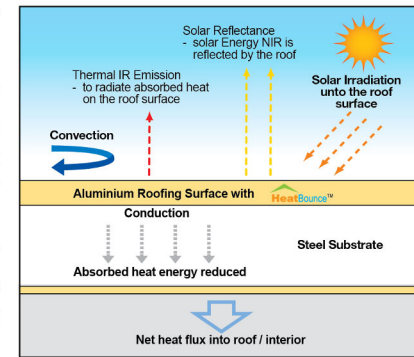
Our innovative Heatbounce solar reflectance technology incorporate in envioshield steel products helps reflect solar energy off the surface instead of absorbing the heat as conventional steel products would. Laboratory tests show that envioshield steel reduces peak roof temperature by up to 8°C, depending on the level of insulation, colour, building shape, and function. The lowering of the building's surface temperature helps mitigate the Urban Heat Island effect, and your building can enjoy greater energy efficiency as your air-conditioning system will not have to work as hard to keep interior temperature at comfortable levels.

The reduced thermal tension in the metal also enhances material durability, thereby lowering long-term maintenance costs for your building.

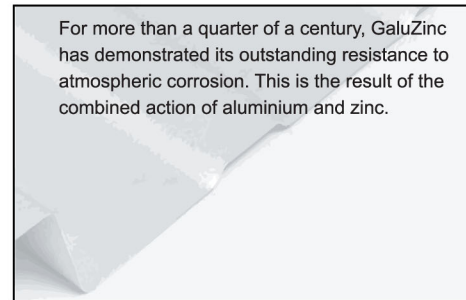
Superior Chalking and Dirt Staining Performance Ultimate Gloss and Colour Retention

With the formulation of highly durable binder PVDF and high performance inorganic pigments, envioShield aluminium has an excellent surface protection/coating which resists tropical dirt particles from embedding onto the paint film to keep the colour bright and clean.

envioShield finishes consist of full strength 70% Hylar 5000 or Kynar 500 PVDF fluoropolymer resin. It has capability to resist the "Photodegradation" effect caused by the solar UV light which distorts the gloss and colour depth on the aluminium surface.



Improved Durability-AZ150



For more than a quarter of a century, GaluZinc has demonstrated its outstanding resistance to atmospheric corrosion. This is the result of the combined action of aluminium and zinc.

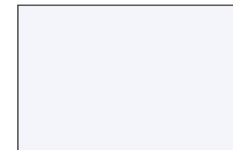
GALUZINC®
Silvery Trendy Steel

Stands for aluminium and zinc, fused in almost equal proportions to coat the steel sheet with a unique silvery spangle, composed off aluminium (55%), zinc (43.5%) and a touch of silicon (1.5%) to achieve perfect harmony with the steel. The result is a combination of the strength of steel, the protection of zinc and stability of aluminium, GaluZinc is an outstanding product in every way, respecting both the environment and the "natural beauty of steel... forever".

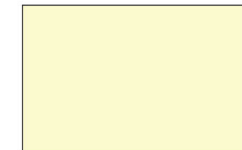
Standard Series



Folkstone White
(83*)



Iris White
(82*)



Luxe Cream
(81*)



Robusta Grey
(44*)



Mysteria Green
(34*)



Stoker Red
(33*)

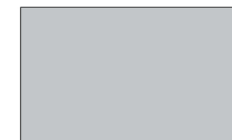


Tesla Blue
(35*)



Walden Beige
(59*)

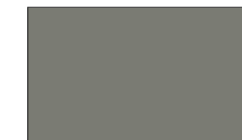
Metallic Series



Dazzling Silver
(77*)



Champagne Gold
(48*)



Riesling Bronze
(33*)



Sparkling Grey
(33*)

*SRI = Solar Reflectance Index

Note: The colours shown in this brochure are as close to the actual colours, however, please check the chosen colours against the actual sample of products before purchasing.