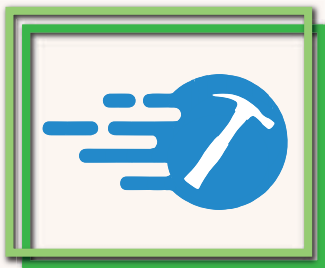
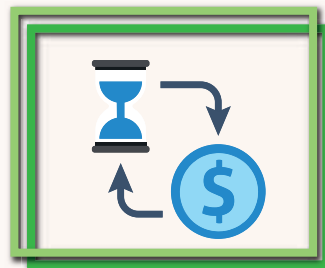


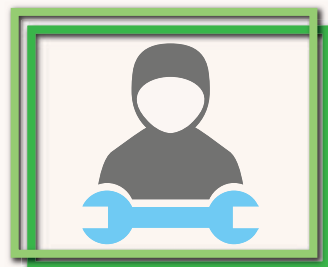
FEATURES & ADVANTAGES



**Quick Erection
(Installation)**



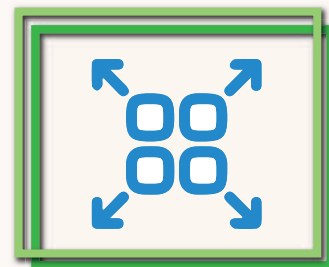
Cost Effective & Durable



**Easy and Affordable
to Maintain**



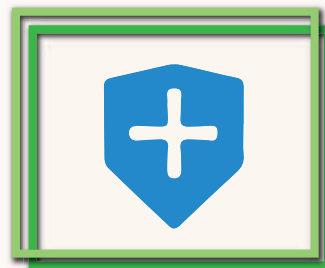
**Modular Design
Future Expansion**



**Quick Dismantle for
Relocation**

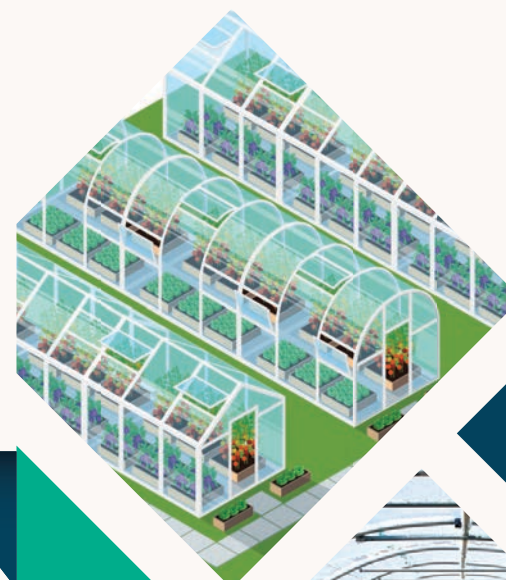
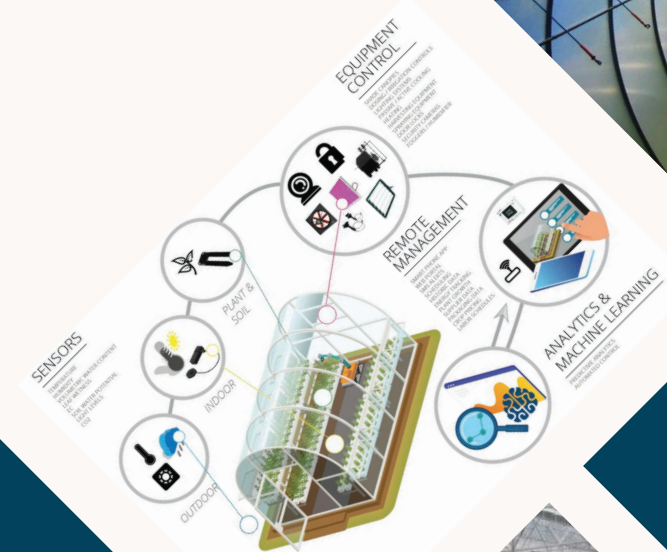


Environmental Friendly



Non-Hazardous

**FUTURE
INNOVATION
SMART
SUSTAINABLE**



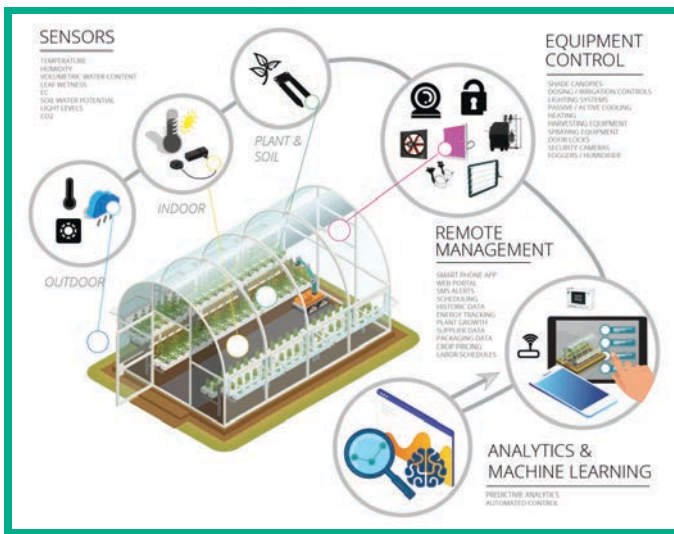
Contact Us

ASTEEL WORKS SDN BHD (1330086-T)

Lot 712, Block 7, Demak Laut Industrial Park,
93050 Kuching, Sarawak, Malaysia.

TEL: +6082 433888

FAX: +6082 433833



A greenhouse is a controlled environment that allows plants to receive specific climatic conditions that they need for stimulated growth. The modern greenhouse is a complete agriculture system, with the ability to carry out minor adjustments required for pushing the boundaries of biological efficiency in any geographic location.

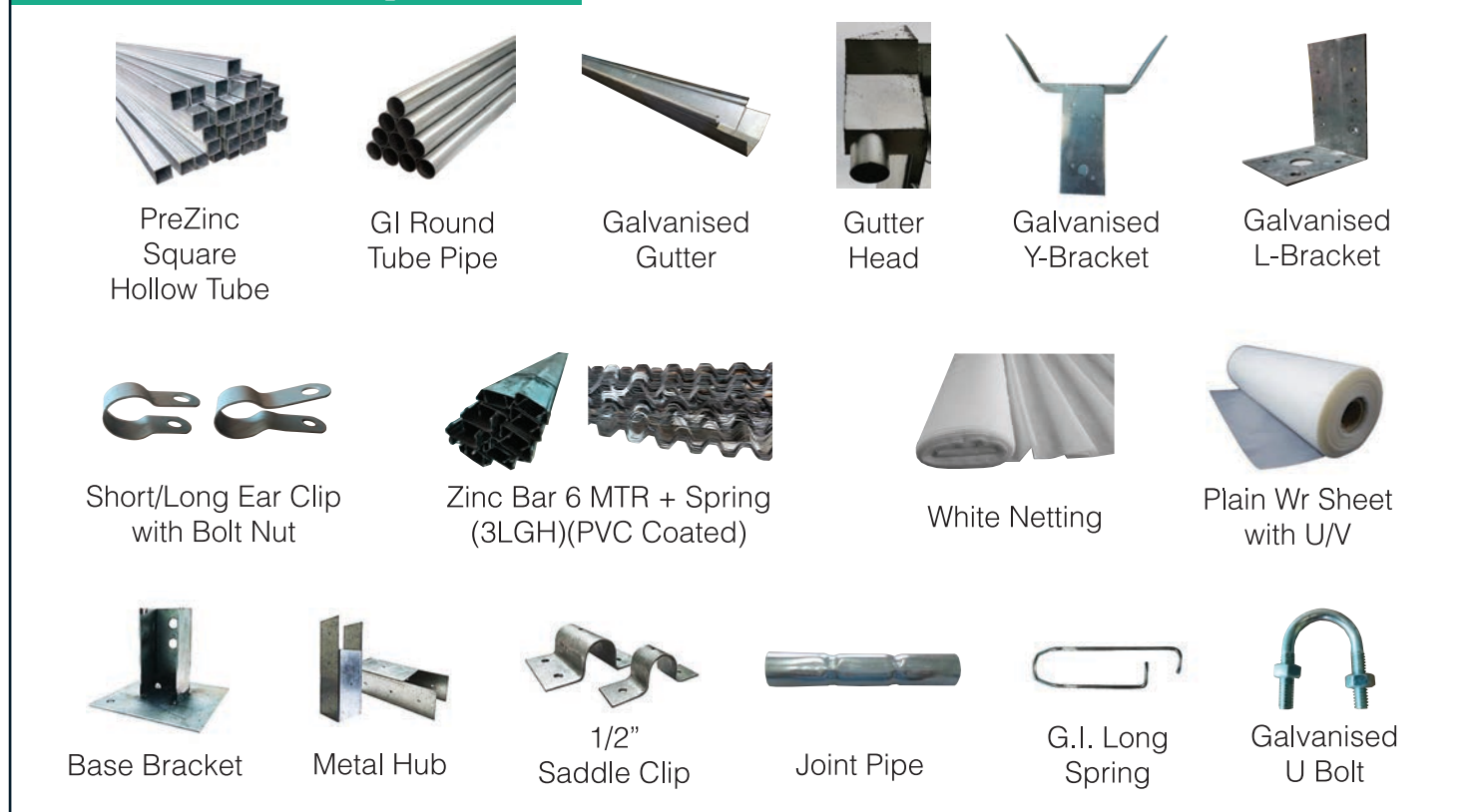


GREENHOUSE STRUCTURE

Scope of Services : Supply & Install (Full Unit), Supply Only (Full Unit), Supply Loose Component



Accessories Components



WHY CHOOSE envio IoT? ?

The envio-IoT application in greenhouses brings in numerous benefits. Here are some top advantages of using envio-IoT enabled greenhouse for agricultural needs.

Minimizing Waster Use

Plant Conditioning

Ideal Atmosphere

Our commercial farm in Sarawak has been fully equipped with SmUrFs - Smart Urban Farming System which provide an integrated IoT platform that inclusive of :

- EC sensor & Auto Mixing Fertilizer
- Pesticides Misting
- Real-time Dashboard & Mobile App

- pH sensor
- Temperature & Humidity sensorCO2

BENEFITS

- Weather prediction
- Soil monitoring sensors
- Better control over internal processes
- Better cost management
- Better waste production
- Increased business efficiency
- Enhanced product quality and volume

