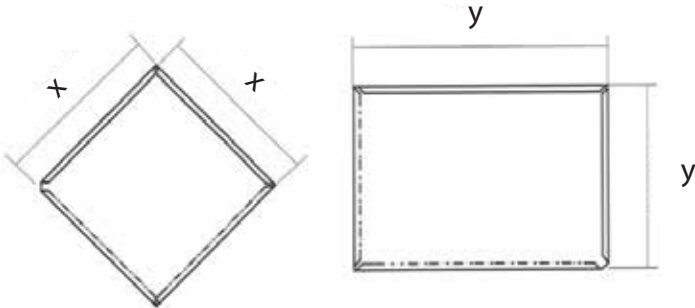




ASTEEL
GROUP

ASHIN

PROFILE DIMENSION



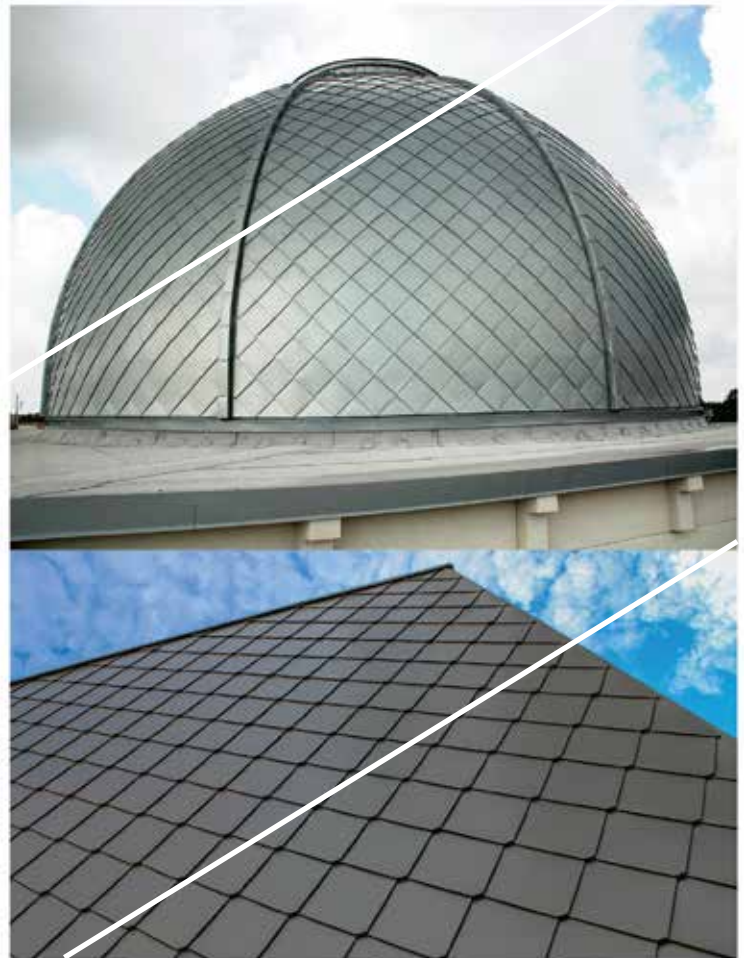
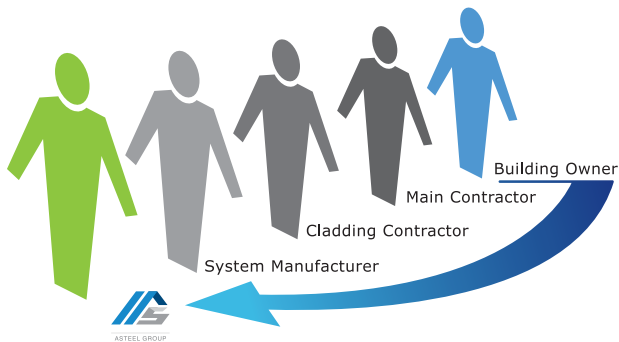
STEEL MATERIAL

envioSERIES pre-finished steel combines outstanding performance with unrivalled reliability and impressive sustainability credentials. The result of sustained evolution and revolutionary coating technology, the best product just got even better.

WARRANTY- Peace Of Mind

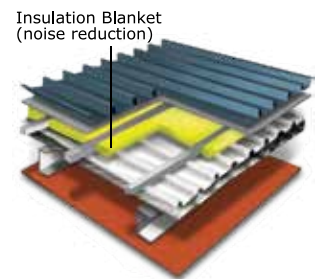
The warranty offered is most comprehensive guaranteed up to 30 years for pre-finished steel products. Dramatic and unrivalled improvements in colour stability and gloss retention are translated into a durable product with greater longevity.

The warranty guarantee is directly with the building owner meaning that in the case of a claim the contact of ASTEEL is direct rather than having to go through the supply chain, saving time, money and unnecessary responsibility avoidance by any parties.

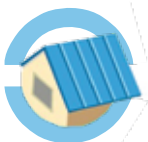


ACOUSTIC ROOF

Composite steel/polymer sheets forming a sandwich structure offer a compact solution that also provides the roof with sound insulation properties. They reduce the impact noise from rain or hail, ensuring a highest standard of interior comfort.



OUR MATERIAL BRAND



DESIGN
FLEXIBILITY



TERMITE
PROOF



WARRANTY



RECYCLING



IMPROVED
COATING



DURABILITY



ASTEEL GROUP
PRODUCT

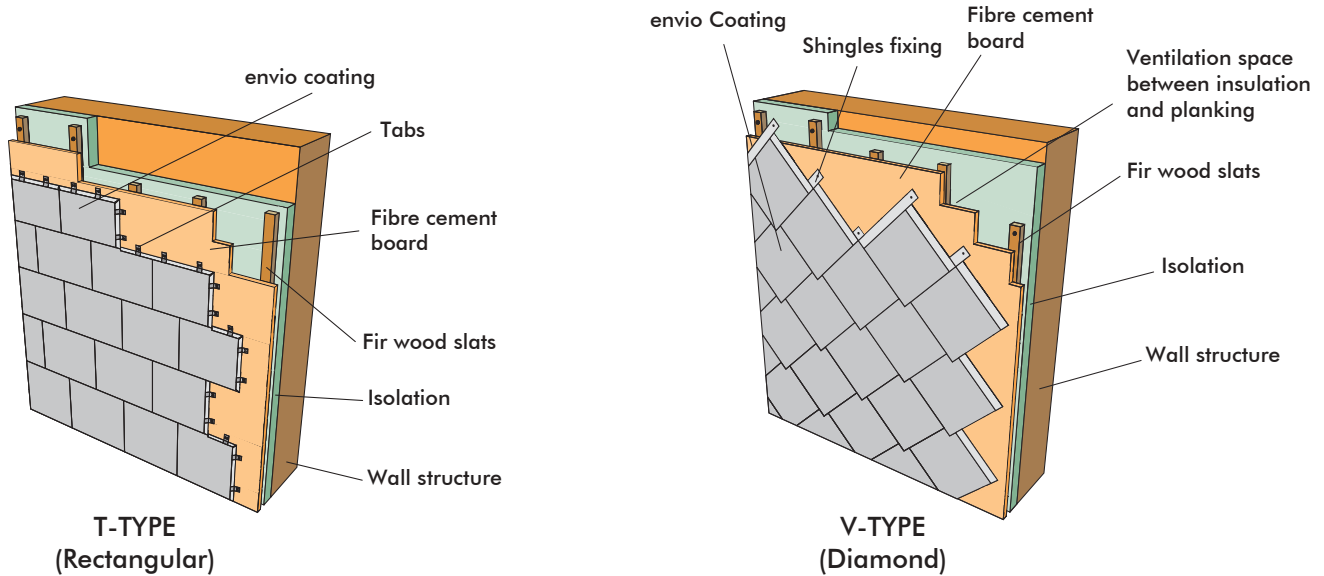
ADVANTAGES

- Trendy shingle profile in diamond shape or brick shape.
- Ability to cover domes with carrying shapes and sizes.
- Aluminium / Zinc alloy coating provides excellent corrosion resistance.
- Infrared cured paint system for better paint performance and smoother surface finish.

SIZE AVAILABLE

Thickness	: 0.55mm TCT 0.48mm TCT
Paint System	: envio coating system - envioPRIME - envioCLEAN - envioMATT - envioTEX
Coating System	: AZ 200 AZ 150

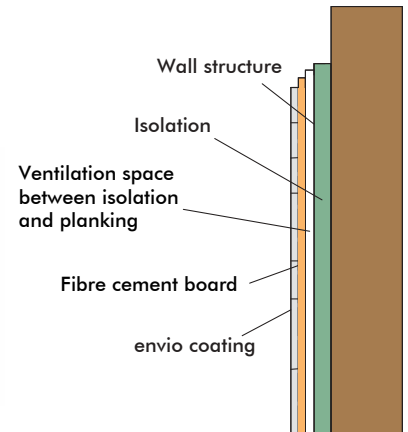
INSTALLATION



Fasteners

All fastening screws must confirm to AS3566 - Class 3. They are to be hexagon headed and for roofing. It must be used with sealing washers. Clips are made of either stainless steel or aluminium / Zinc steel.

Clip for steel (0.75mm BMT or greater)



GENERAL NOTE: OIL CANNING

Oil canning is an aesthetic issue, not a structural problem or a defect. It is unrealistic to expect any architectural roof or similar wide-metal element to be totally free of some degree of oil-canning. While oil canning cannot be totally eliminated, adherence to industry acceptance and recognized methods of design, metal specification, handling, fabrication, and installation can minimize its occurrence. Carefully attention to the causes of oil canning within all the phases of design and construction is the most effective way to reduce its occurrence.

DISTRIBUTE BY:

ASTEEL (SARAWAK) SDN BHD (1363731-A)

Kuching Factory

Lot 801, Block 7, Demak Laut Industrial Park,
93050 Kuching, Sarawak, Malaysia.
TEL: +6082 433888
FAX: +6082 433833

Bintulu Factory

Lot 598 Block 20, Jalan Tg. Kidurong,
Kidurong Industrial Estate,
97000 Bintulu, Sarawak, Malaysia.
TEL: +6086 255720
FAX: +6086 255020

Mukah Factory

Sublot 6&7, Lot 1114&1115,
Seng Ling Industrial Estate, Jalan Bedanga,
96400 Mukah, Sarawak, Malaysia
TEL: +6016 7020 149

Miri Factory

Lot 7900 D/lot 872 Block 5,
Kuala Baram Land District,
98000 Miri, Sarawak, Malaysia.
TEL: +6085 651925
FAX: +6085 641045

MANUFACTURE BY:

ASTEEL SDN BHD (393042-D)

Kuching Factory

Lot 712, Block 7, Demak Laut Industrial Park,
93050 Kuching, Sarawak, Malaysia.
TEL: +6082 433888
FAX: +6082 433833