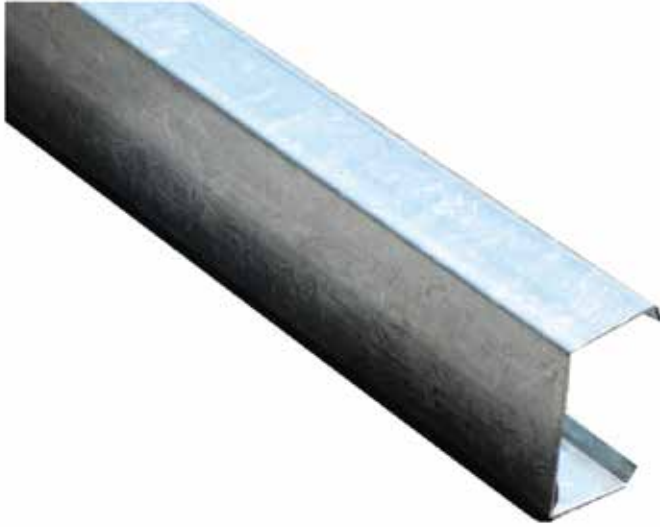




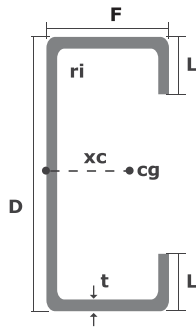
ASTEEL GROUP

C-LIPPED CHANNEL



PROFILE DIMENSION

With the zinc coating and yield strength conforming to MS2660:2020, ASTEEL Galvanised C-Lipped Channel ensure long service life, strong and will not warp, crack or sag. Commonly use as support for roofing & wall cladding.



SPECIFICATION

Material Used: Hot Dipped Galvanised Steel
Standard: MS2660:2020

Available Thickness (mm): 1.0, 1.2, 1.5, 1.9, 2.4,

Yield Strength:

Min 550 Mpa for thickness 1.0, 1.2

Min 450 Mpa for thickness 1.5, 1.9, 2.4

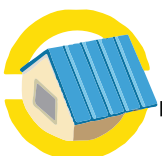


Tolerance

Depth (D)	± 3 mm
Flange (F)	± 3 mm
Lip (L)	± 3 mm
Hole Centre	± 2 mm
Thickness	± 0.05 mm
Purlin Length	± 5 mm

Zinc Coating Mass

200 g/m ²	275 g/m ²
1.00 mm	1.5 mm
1.20 mm	1.9 mm
-	2.4 mm



DESIGN
FLEXIBILITY



TERMITE
PROOF



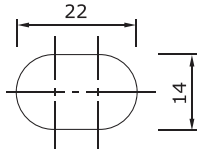
DURABILITY



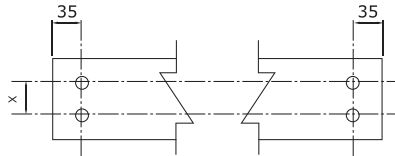
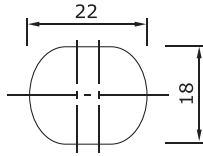
ASTEEL GROUP
PRODUCT

HOLING

There are 2 types of elongated hole for customer selection. Recommendation of hole type shall refer to your requirement.



Hole Type



Pre-punched Hole Detail

Standard Hole-To-Hole Distance

Purlin Size	Hole-To-Hole Distance, x (mm)
C100	50
C125	50
C150	60
C200	110
C250	160

GALVANISED C-LIPPED CHANNEL FULL SECTION PROPERTIES

Purlin	Weight Per Meter	Load Per Meter	Depth, d	Width, b	Lip, c	Effective Depth, d _{eff}	Effective Width, b _{eff}	Effective Lip, c _{eff}	Thickness t	Radius of Inside Bend, R	Radius of Arc Centre Line, r	Buckling Parameter, u	Area, A	Distance Between Centroid and Centerline of Web, X	Distance Between Shear Center and Centerline of Web, Y	Centerline of Web in y axis, y _c	Second Moment of Area, I _{xx}	Second Moment of Area, I _{yy}
	kg/m	kN/m	mm	mm	mm	mm	mm	mm	mm	mm	mm	mm	mm ²	mm	mm	mm	mm ⁴	mm ⁴
AC7510	1.460	0.014	75	45	15	68.000	38.000	11.500	1.00	2.5	3.000	4.710	186.0	16.7	37.5	37.5	173189	56166
AC7512	1.743	0.017	75	45	15	67.600	37.600	11.300	1.20	2.5	3.100	4.867	222.0	16.6	37.5	37.5	205487	66340
AC7515	2.159	0.021	75	45	15	67.000	37.000	11.000	1.50	2.5	3.250	5.103	275.0	16.4	37.5	37.5	252509	80963
AC7519	2.708	0.027	75	45	15	66.200	36.200	10.600	1.90	2.5	3.450	5.417	345.0	16.2	37.5	37.5	312581	99295
AC10010	1.766	0.017	100	50	17	93.000	43.000	13.500	1.00	2.5	3.000	4.710	225.0	17.3	25.7	50.0	365046	83989
AC10012	2.112	0.021	100	50	17	92.600	42.600	13.300	1.20	2.5	3.100	4.867	269.0	17.2	25.5	50.0	434085	99391
AC10015	2.622	0.026	100	50	17	92.000	42.000	13.000	1.50	2.5	3.250	5.103	334.0	17.1	25.3	50.0	535208	121651
AC10019	3.289	0.032	100	50	17	91.200	41.200	12.600	1.90	2.5	3.450	5.417	419.0	16.9	25.1	50.0	665545	149785
AC10024	4.106	0.040	100	50	17	90.200	40.200	12.100	2.40	2.5	3.700	5.809	523.0	16.6	24.7	50.0	821356	182534
AC12515	2.912	0.029	125	50	17	117.000	42.000	13.000	1.50	2.5	3.250	5.103	371.0	15.3	23.9	62.5	899162	131455
AC12519	3.658	0.036	125	50	17	116.200	41.200	12.600	1.90	2.5	3.450	5.417	466.0	15.1	23.6	62.5	1120556	161898
AC12524	4.577	0.045	125	50	17	115.200	40.200	12.100	2.40	2.5	3.450	5.809	583.0	14.9	23.3	62.5	1386687	197359
AC15015	3.635	0.036	150	65	20	142.000	57.000	16.000	1.50	2.5	3.250	5.103	463.0	20.4	31.2	75.0	1655959	278701
AC15019	4.569	0.045	150	65	20	141.200	56.200	15.600	1.90	2.5	3.450	5.417	582.0	20.2	30.9	75.0	2070322	345404
AC15024	5.731	0.056	150	65	20	140.200	55.200	15.100	2.40	2.5	3.700	5.809	730.0	20.0	30.6	75.0	2572486	424449
AC20015	4.459	0.044	200	75	20	192.000	67.000	16.000	1.40	2.5	3.250	5.103	568.0	21.2	33.5	100.0	3532621	430664
AC20019	5.613	0.055	200	75	20	191.200	66.200	15.600	1.90	2.5	3.450	5.417	715.0	21.0	33.2	100.0	4427581	535068
AC20024	7.049	0.069	200	75	20	190.200	65.200	15.100	2.40	2.5	3.700	5.809	898.0	20.8	32.9	100.0	5518847	659600
AC25015	5.283	0.052	250	85	20	242.000	77.000	16.000	1.50	2.5	3.250	5.103	673.0	22.2	35.9	125.0	6416841	623769
AC25019	6.657	0.065	250	85	20	241.200	76.200	15.600	1.90	2.5	3.450	5.417	848.0	22.0	35.7	125.0	8055701	776465
AC25024	8.368	0.082	250	85	20	240.200	75.200	15.100	2.40	2.5	3.700	5.809	1066.0	21.8	35.4	125.0	10062012	959500
AC30015	6.225	0.061	300	100	20	292.000	92.000	16.000	1.50	2.5	3.250	5.103	793.0	25.0	40.8	150.0	10849075	978735
AC30019	7.850	0.077	300	100	20	291.200	91.200	15.600	1.90	2.5	3.450	5.417	1000.0	24.8	40.5	150.0	13638128	1221006
AC30024	9.875	0.097	300	100	20	290.200	90.200	15.100	2.40	2.5	3.700	5.809	1258.0	24.6	40.2	150.0	17063497	1513043

STORAGE

Galvanised C-Lipped Channel should be kept under shed or wrapped under plastic sheets well ventilated and clear from ground to avoid moisture contact. Always keep the Galvanised C-Lipped Channel at a slanting angle to let water run off. Do not get in contact with chemicals, dirt, oil based liquids and corrosive vapours.

MANUFACTURE BY:

ASTEEL (SARAWAK) SDN BHD (1363731-A)

Kuching Factory

Lot 801, Block 7,
Demak Laut Industrial Park,
93050 Kuching, Sarawak, Malaysia.
TEL: +6082 433888
FAX: +6082 433833

Bintulu Factory

Lot 598 Block 20, Jalan Tg. Kidurong,
Kidurong Industrial Estate,
97000 Bintulu, Sarawak, Malaysia.
TEL: +6086 255720
FAX: +6086 255020

Mukah Factory

Sublot 6&7, Lot 1114&1115,
Seng Ling Industrial Estate,
Jalan Bedanga,
96400 Mukah, Sarawak, Malaysia
TEL: +6016 7020 149

Miri Factory

Lot 7900 D/lot 872 Block 5,
Kuala Baram Land District,
98000 Miri, Sarawak, Malaysia.
TEL: +6085 651925
FAX: +6085 641045

DISTRIBUTE BY: