



ASTEEL GROUP



ASTEEL GROUP



PRODUCT IDENTIFICATION

Please check the brand along the edge of the coil reverse side for product identification and originality.

envioClean 55% Al-Zn Alloy

EXTRA DURABILITY FROM



PREFERRED SUBSTRATES:

GALUZINC® G550 AZ200 Steel (Aluminium- Zinc Alloy Coated Steel)

GALUZINC® G300 AZ200 Steel (Aluminium- Zinc Alloy Coated Steel)

DISTRIBUTE BY:

ASTEEL (SARAWAK) SDN BHD (1363731-A)

Kuching Factory

Lot 801, Block 7, Demak Laut Industrial Park,
93050 Kuching, Sarawak, Malaysia.
TEL: +6082 433888
FAX: +6082 433833

Bintulu Factory

Lot 598 Block 20, Jalan Tg. Kidurong,
Kidurong Industrial Estate,
97000 Bintulu, Sarawak, Malaysia.
TEL: +6086 255720
FAX: +6086 255020

Mukah Factory

Sublot 6&7, Lot 1114&1115,
Seng Ling Industrial Estate, Jalan Bedanga,
96400 Mukah, Sarawak, Malaysia
TEL: +6016 7020 149

Miri Factory

Lot 7900 D/lot 872 Block 5,
Kuala Baram Land District,
98000 Miri, Sarawak, Malaysia.
TEL: +6085 651925
FAX: +6085 641045

ASTEEL (SABAH) SDN BHD (1062207-W)

Kota Kinabalu Factory

Lot 10, Package 1 General Industrial Zone
Kota Kinabalu Industrial Park (KKIP)
KM 26 Jalan Tuaran 88460
Kota Kinabalu, Sabah, Malaysia.
TEL: +6088 498866
FAX: +6088 498877

Tawau Factory

TB 758 Mile 3½ Jalan Apas,
91015 Tawau,
Sabah, Malaysia.
TEL: +6089 912500 / 916688
FAX: +6089 915000

ASTEEL SYNERGY SDN BHD (1359029-V)

Klang Factory

PT146099, Pelabuhan Barat,
Pulau Indah, 42000 Pelabuhan Klang,
Selangor, Malaysia.
TEL: +6013-207 9812

ASTAR STEEL SDN BHD (782292-U)

Factory & Office

PTD 102979, Jalan Seelong Jaya 15,
Mukim Senai Kulai, 81400 Senai, Johor.
TEL: +607-5992846 / 2849
FAX: +607-5992854
Email: enquiry@acesteel.com.my

MANUFACTURE BY:

ASTEEL SDN BHD (393042-D)

Kuching Factory

Lot 712, Block 7, Demak Laut Industrial Park,
93050 Kuching, Sarawak, Malaysia.
TEL: +6082 433888
FAX: +6082 433833

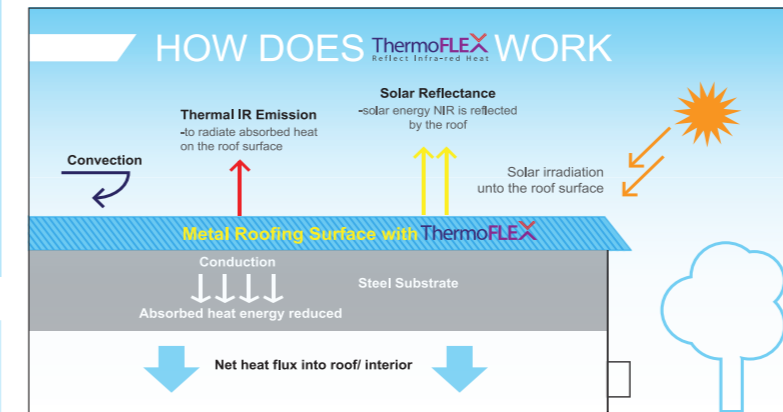


STAY FRESH AND COOL

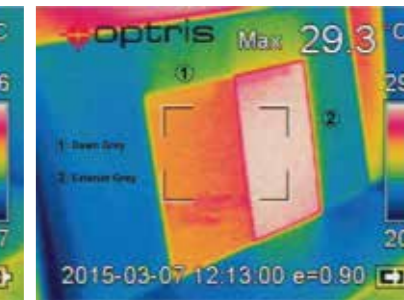
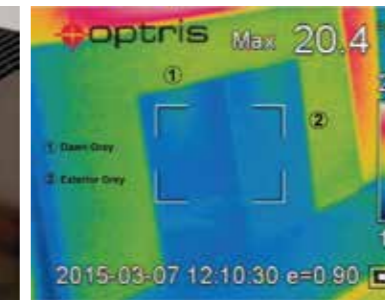
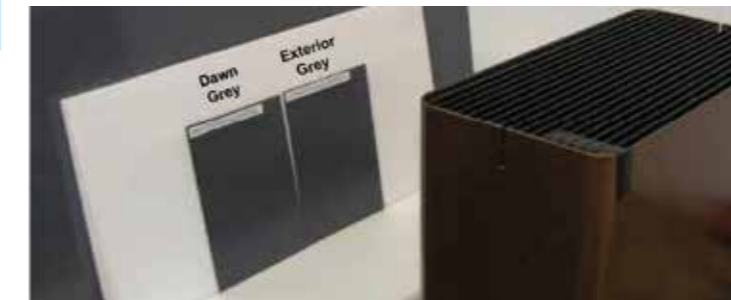
Why choose envioClean[®] from ASTEEL?

- ✓ ASTEEL is wholly own subsidiaries of YKGI which is listed in Bursa Main Market
- ✓ Produced with Japanese Advance Technology
- ✓ Complied with SIRIM Product Certification
- ✓ Certified under CIDB Akta 520
- ✓ Meets International Building Standards
- ✓ Product performance is field tested
- ✓ Peace of Mind with Manufacturer's Warranty to Customer

Improved Heat Insulation



ThermoFLEX[®] technology can be an effective way to reduce the energy load of your building, by reflecting heat away from your building, thus cooling energy costs reduced, as well as potentially reduce emissions from electricity generation.



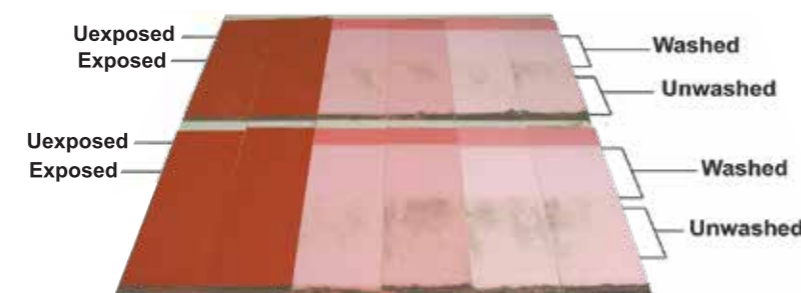
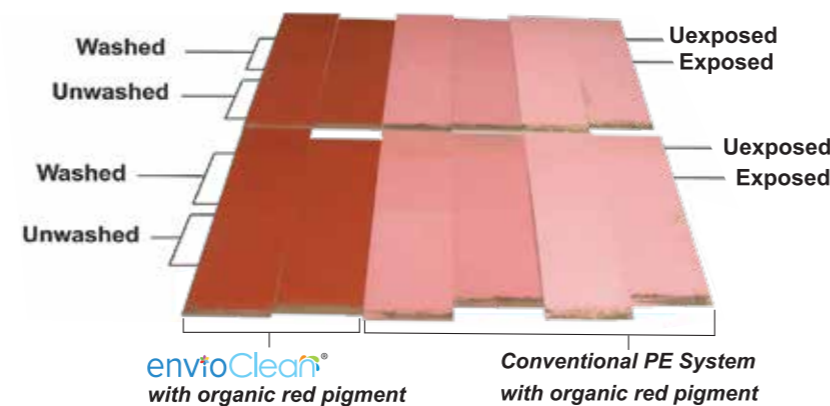
CLEAN TECHNOLOGY - Improved Dirt Resistance

envioClean[®] Self Cleaning Steel is a premium coating system specially formulated to resist tropical stain. The main characteristic is the high surface hardness with wash ability, which resist dirt and particles from being bonded to the surface and easily being washed by rainfall, thus providing timeless freshness and minimum maintenance.



2 Years Exposure at 45° South Facing, Shah Alam, Malaysia.

(4 YEARS SUB-TROPICAL EXPOSURE)



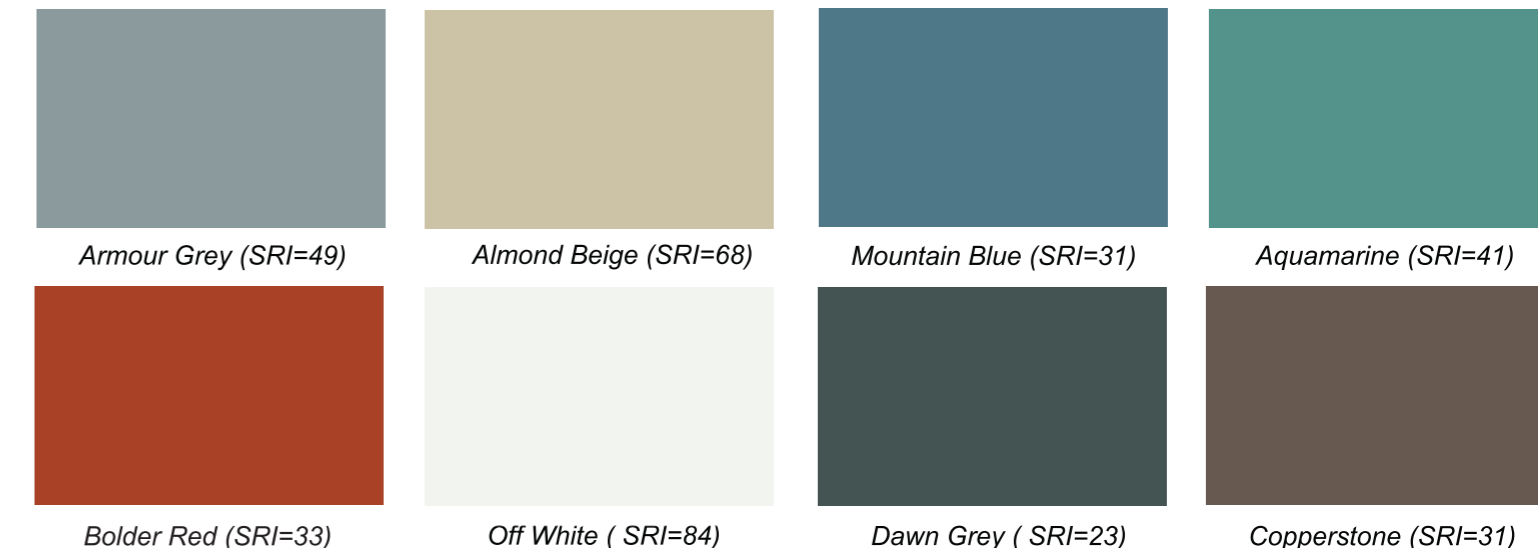
Improved Durability-AZ150

For more than a quarter of a century, GaluZinc has demonstrated its outstanding resistance to atmospheric corrosion. This is the result of the combined action of aluminium and zinc.

GALUZINC[®] Silvery Trendy Steel

Stands for aluminium and zinc, fused in almost equal proportions to coat the steel sheet with a unique silvery spangle, composed off aluminium (55%), zinc (43.5%) and a touch of silicon (1.5%) to achieve perfect harmony with the steel. The result is a combination of the strength of steel, the protection of zinc and stability of aluminium, GaluZinc is an outstanding product in every way, respecting both the environment and the "natural beauty of steel... forever".

*SRI = Solar Reflectance Index



Note: The colours shown in this brochure are as close to the actual colours, however, please check the chosen colours against the actual sample of products before purchasing.

NINE FEATURES IN THIS PRODUCT

- 01_ Improved durability
- 02_ Improved colour retention
- 03_ Improved dirt resistance
- 04_ Optimized flexibility
- 05_ Balance hardness
- 06_ Enhanced corrosion protection
- 07_ Improved chemical resistance
- 08_ Reduced Maintenance
- 09_ Solar Reflectance

Improved Weathering Resistance

envioClean optimised formulation using super durable paint system make it an ideal choice in the following aspects:

- Longer-lasting colour
- Higher gloss retention
- Stronger delamination resistance
- Better chalking resistance
- Superior stain resistance
- Higher elasticity for flexible forming

