

envioMATT™
Rough Matt Steel

PRODUCT IDENTIFICATION

Please check the brand along the edge of the coil reverse side for product identification and originality.

envioMATT 55% Al-Zn Alloy

EXTRA DURABILITY FROM

envioMATT™ XD

PREFERRED SUBSTRATES:

GALUZINC® G550 AZ200 Steel (Aluminium- Zinc Alloy Coated Steel)

GALUZINC® G300 AZ200 Steel (Aluminium- Zinc Alloy Coated Steel)

DISTRIBUTE BY:

ASTEEL (SARAWAK) SDN BHD (1363731-A)

Kuching Factory

Lot 801, Block 7, Demak Laut Industrial Park,
93050 Kuching, Sarawak, Malaysia.
TEL: +6082 433888
FAX: +6082 433833

Bintulu Factory

Lot 598 Block 20, Jalan Tg. Kidurong,
Kidurong Industrial Estate,
97000 Bintulu, Sarawak, Malaysia.
TEL: +6086 255720
FAX: +6086 255020

Mukah Factory

Sublot 6&7, Lot 1114&1115,
Seng Ling Industrial Estate, Jalan Bedanga,
96400 Mukah, Sarawak, Malaysia
TEL: +6016 7020 149

Miri Factory

Lot 7900 D/lot 872 Block 5,
Kuala Baram Land District,
98000 Miri, Sarawak, Malaysia.
TEL: +6085 651925
FAX: +6085 641045

ASTEEL (SABAH) SDN BHD (1062207-W)

Kota Kinabalu Factory

Lot 10, Package 1 General Industrial Zone
Kota Kinabalu Industrial Park (KKIP)
KM 26 Jalan Tuaran 88460
Kota Kinabalu, Sabah, Malaysia.
TEL: +6088 498866
FAX: +6088 498877

Tawau Factory

TB 758 Mile 3½ Jalan Apas,
91015 Tawau,
Sabah, Malaysia.
TEL: +6089 912500 / 916688
FAX: +6089 915000

ASTEEL SYNERGY SDN BHD (1359029-V)

Klang Factory

PT146099, Pelabuhan Barat,
Pulau Indah, 42000 Pelabuhan Klang,
Selangor, Malaysia.
TEL: +6013-207 9812

ASTAR STEEL SDN BHD (762292-U)

Factory & Office

PTD 102979, Jalan Seelong Jaya 15,
Mukim Senai Kulai, 81400 Senai, Johor.
TEL: +607-5992846 / 2849
FAX: +607-5992854
Email: enquiry@acesteel.com.my

MANUFACTURE BY:

ASTEEL SDN BHD (393042-D)

Kuching Factory

Lot 712, Block 7, Demak Laut Industrial Park,
93050 Kuching, Sarawak, Malaysia.
TEL: +6082 433888
FAX: +6082 433833

envioMATT®
Rough Matt Steel



AGES OF PROXIMITY OF PROTECTION

Why choose envioMATT[®] from ASTEEL?

- ▶ ASTEEL is wholly own subsidiaries of YKGI which is listed in Bursa Main Market
- ▶ Produced with Japanese Advance Technology
- ▶ Complied with SIRIM Product Certification
- ▶ Certified under CIDB Akta 520
- ▶ Meets International Building Standards
- ▶ Product performance is field tested
- ▶ Peace of Mind with Manufacturer's Warranty to Customer

Features

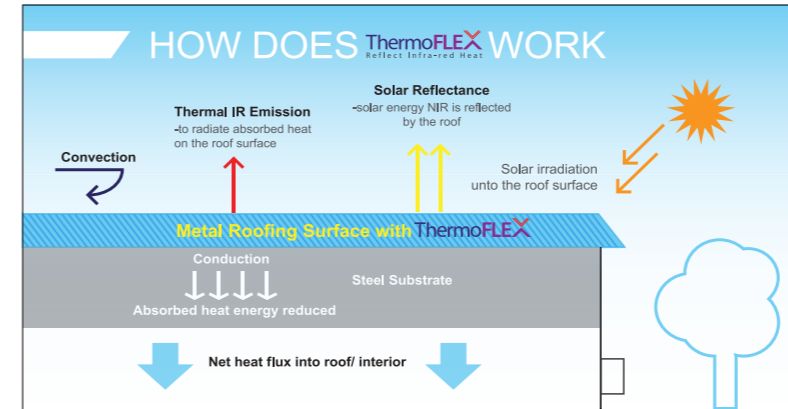
- Matt and luxurious feel**
- Excellent weather resistance**
- Better formability & flexibility**
- Tougher scratch resistance**
- Lower water permeability**
- Increased chemical resistance**

Rough Technology

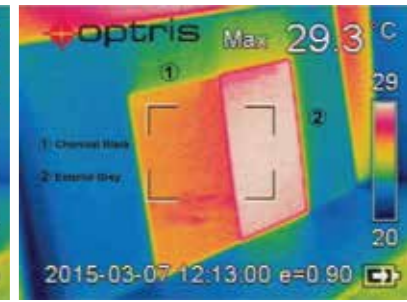
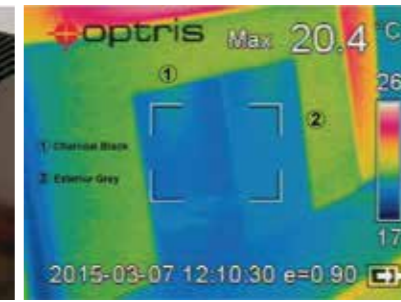
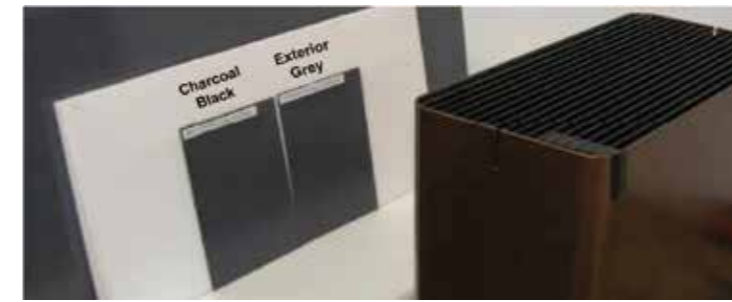
envioMATT is your inspiring solution for building envelope, combine lightness, strength, durability, high performance, low maintenance and sustainability with the creative freedom to produce outstanding architecture.

envioMATT steel incorporate with innovative texture surface induced a matt finishing, providing sleek and gorgeous brand new building, thus keeping your building looks new for longer. envioMATT steel thus facilitated the maintenance of a more uniform appearance accross your building.

Improved Heat Insulation



ThermoFLEX[®] technology can be an effective way to reduce the energy load of your building, by reflecting heat away from your building, thus cooling energy costs reduced, as well as potentially reduce emissions from electricity generation.



Improved Durability-AZ150

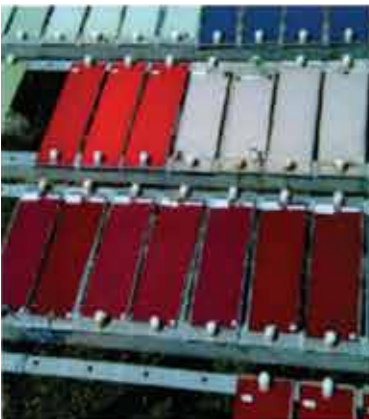
For more than a quarter of a century, GaluZinc has demonstrated its outstanding resistance to atmospheric corrosion. This is the result of the combined action of aluminium and zinc.

GALUZINC[®]

SILVERY TRENDY STEEL

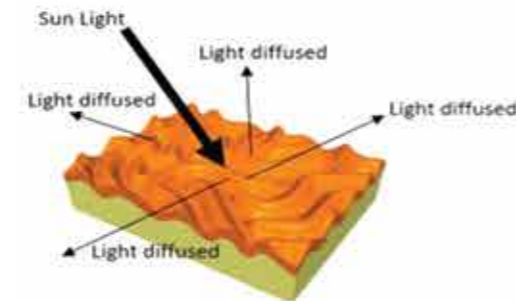
Stands for aluminium and zinc, fused in almost equal proportions to coat the steel sheet with a unique silvery spangle, composed off aluminium (55%), zinc (43.5%) and a touch of silicon (1.5%) to achieve perfect harmony with the steel. The result is a combination of the strength of steel, the protection of zinc and stability of aluminium, GaluZinc is an outstanding product in every way, respecting both the environment and the "natural beauty of steel... forever".

Research & Development



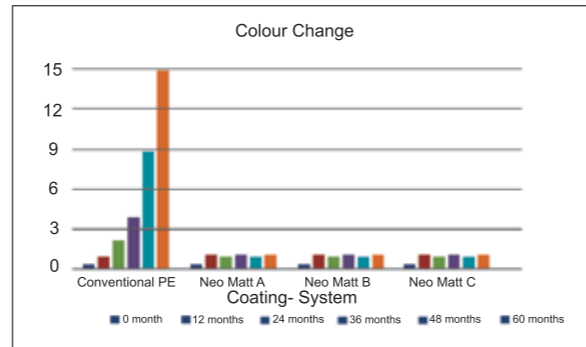
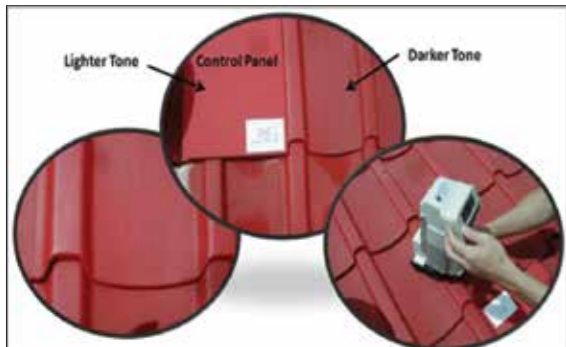
The proprietary paint system is a result of extensive R&D testing, including actual field exposure testing. It has been proven that the paint system used for steel provides superior durability against weathering and UV penetration when compared with other prepainted steel.

How does it works



Light diffuse to different direction, which naked eye perceived as matt and elegant finishes.

Improved Corrosion Protection



ASTEEL utilises optimum paint formulation and inorganic pigment blends to provide excellent long term colour stability for envioMATT steel products, gives you a building that lasts longer through enhanced chalk resistance properties that offer a higher resistance level to paint breakdown that happens so often in Asia's hot climate.



NAVY BLUE (SRI=28)



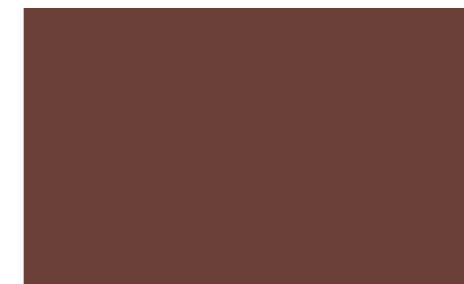
GARDEN GREEN (SRI=38)



CHARCOAL BLACK (SRI=12)



ARMOUR GREY (SRI=65)



COPPER RED (SRI=33)

Note: The colours shown in this brochure are as close to the actual colour, however, please check the chosen colours against the actual sample of products before purchasing.